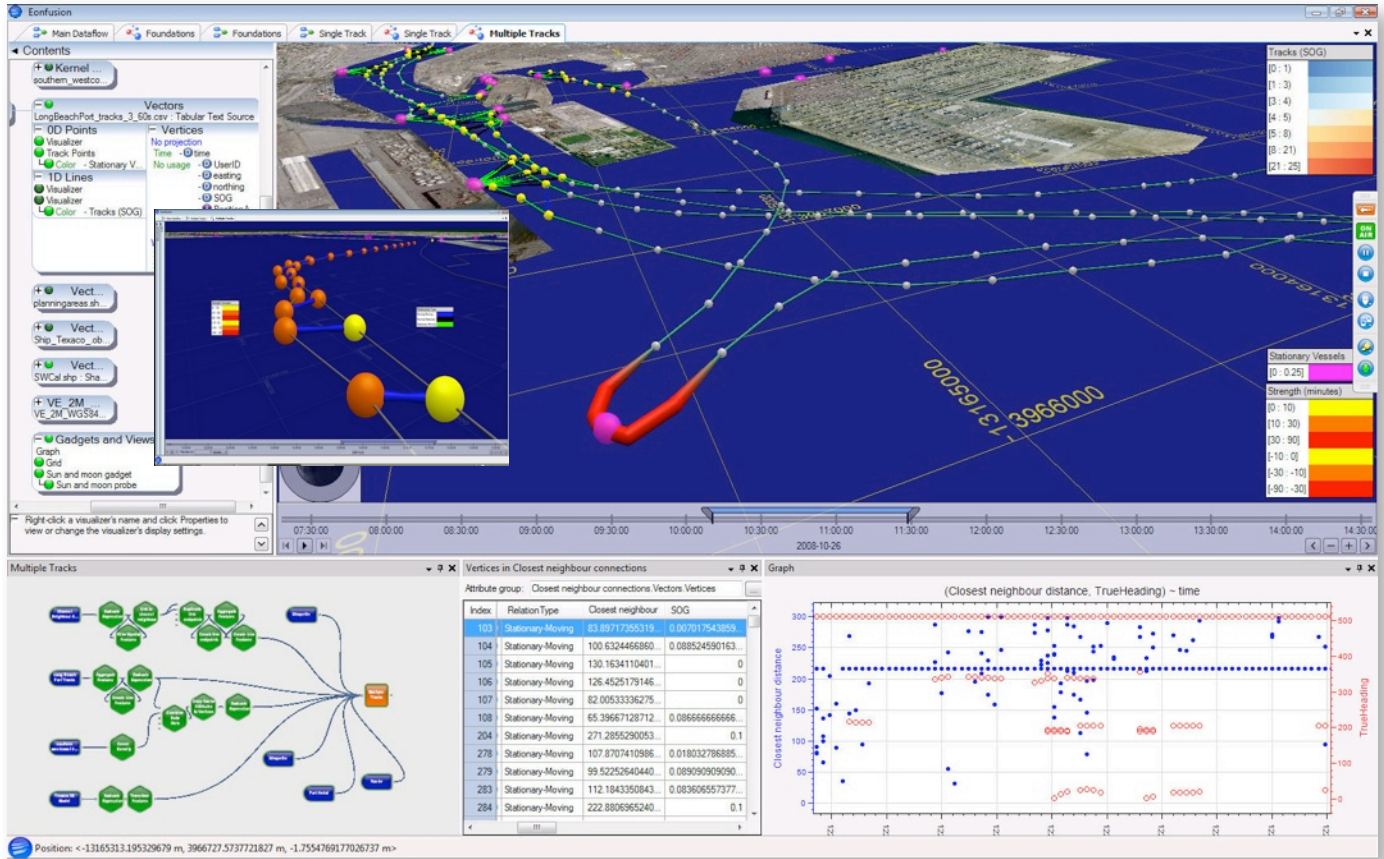
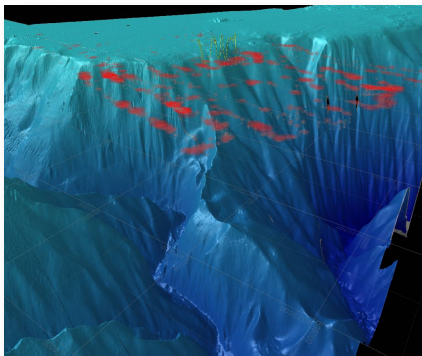




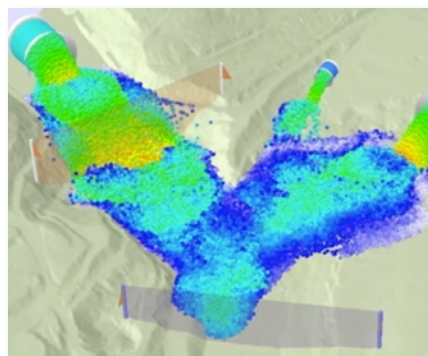
Complex Geospatial visualization made easy. Time made visible.



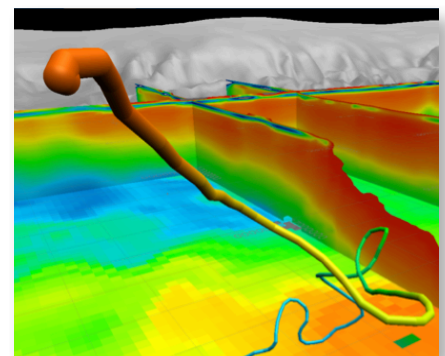
Eonfusion expands your geospatial analysis capabilities and lets you **explore time** as a fully-fledged geospatial dimension. A natively multidimensional product that can quickly fuse disparate data sets to create insightful geospatial visualizations together with powerful analytical tools to seamlessly explore them through space and time. Eonfusion's new geospatial modeling and fusion operators break down barriers between traditional data types and even enable attributes to vary continuously over single spatial features.



Scale-independent fusion, high precision and data integrity ensured throughout



Complete user customization of operators (smoothed-particle hydrodynamics shown)



Complete 3D-Raster and Vector Environment including dynamic volumes, video and LIDAR

Please contact us! • Email: Doug.Gerull@eonfusion.com • Telephone: +1 (303) 444 1717



Geospatial 4D ANALYSIS

Eonfusion enables analysts to build multiple active views that may include embedded graphs, gadgets, and a full range of data types from simple points to complex video as needed.

Eonfusion visual interactive dataflow interface easily builds simple or sophisticated workflows that simultaneously document methods, metadata and more.

The dataflows are self-contained, repeatable, and easily transportable to other workstations, even via email.



Complete user customization capability is provided through full API C# access to many included operators. Users can easily build their own libraries of multi-dimensional operators such as the 6 dimensional example shown to the right; where user-defined behavior patterns are detected and visualized through time using video in the geospatial scene.

For information contact:

Doug Gerull +1 303 444 1717

doug.gerull@eonfusion.com

Eonfusion, LLC
1140 Portland Place, #107
Boulder, CO 80304 USA

